

High School Tuition Support Fund system

Important notification
(Be sure to show to
parents)

1. Overview of system

The High School Tuition Support Fund is a financial support mechanism funded by the national government for covering tuition payments in order to reduce the educational cost burden on families. Approximately 80 percent of the high school students nationwide take advantage of this support system.

Qualifications for receiving support

Must be enrolled in a high school (including colleges of technology, specialized training colleges, etc.), and reside in Japan. Foreign students are also eligible.

However, those under the following categories are not eligible.

- Those for whom the tax amount calculated by the following formula pertaining to household income that the student's household pays is 304,200 yen or greater (households whose annual income is 9.1 million yen or higher)

Formula

Amount of taxable income (for local residence tax) x 6% – amount of deductions (for local residence tax)

- Those who have graduated from high school or completed their course of study (excluding those whose period of study is less than 3 years).
- Those whose period of enrollment in high school, etc. exceeds 36 months in total (separate calculation for part-time or correspondence course students).

2. Application for support, submission of income statement

Application for receiving support (for newly enrolled students)

- An application is required for receiving support. At the time of enrollment in April, etc. the school will inform the student of the application procedure, which the student is required to follow. Since the start of the support is contingent on the receipt of the application, students should take care not to be late in the submission of their application.
- After the screening of the application by the prefectural government, the student will be notified of the result.

Submission of income status statements (for enrolled students)

- Since the household income status information (tax amount) will be updated around July each year, the student must submit the income status statement following the directions given by the school. Students should be aware that if they do not complete the submission procedure, the tuition support will not be provided for the July period and beyond.
※If the student has provided his/her My Number previously, it may not be necessary to complete part of the procedures. For details, students should follow the instructions given by their school.
- After the screening of the income statements by the prefectural government, the student will be notified of the result.

3. Payment amount

(1) Public high school student

Amount equivalent to public high school tuition (118,800 yen per year)
(The tuition cost for a national public high school student will be zero.)

(2) Private high school student

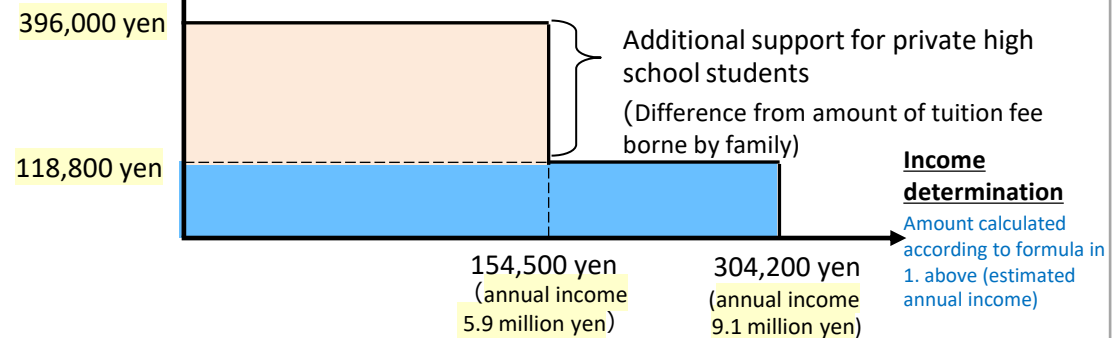
Amount of support payment will vary depending on household income. (See figure on right.)

※The criterion for the income determination will be the amount calculated according to the formula in 1. above.

The figure on the right showing Estimated Annual Income is the standard for determining annual income assuming a family of four, with two parents and one high school student and one junior high school student, and one of the parents employed. It should be noted that the actual target income amount will change according to the number of family members, their age, the number of family members working, etc.

Support amount for full-time high school student

Maximum amount of payment



Please see the reverse side for detailed procedures, etc. →

4. Application (registration of income status)

Necessary for all recipients!

Please complete the application following the instructions from your school at the time of your enrollment. In principle, the application can be submitted online (by PC or smartphone); it will record your family's income by one of the following methods.

(1) Those with My Number card

My Number card will be read, and tax information obtained from Mynportal.

(2) Those without My Number card

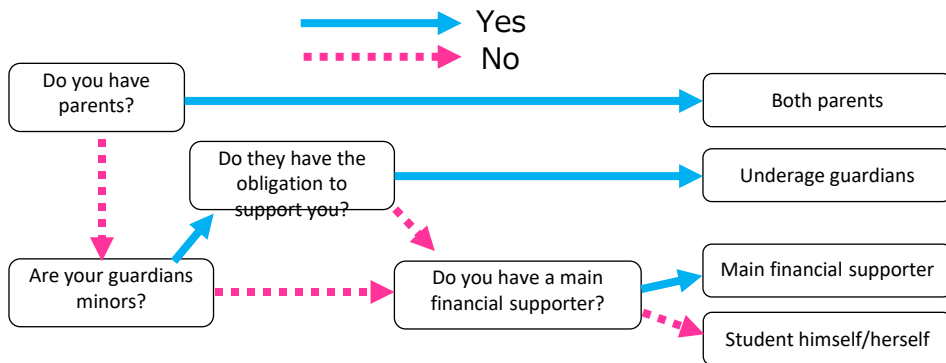
Enter parent's personal number in order for prefectural government to confirm tax information.

※ Since application methods differ according to prefecture, follow your school's directions when submitting application.

Caution points

- Making false statements in the application to get the tuition support is subject to punishment.
- You will be guided through the application process by directions given on the screen (such as the figure below). In principle, for recording the household income status, the income for all guardians (for example, if your guardians are your parents, the income for two persons) is required, Details are provided online.

Whose income is required to be recorded?



Lowering age of adulthood

From April 2022, the legal age of adulthood will be lowered to 18. In case a high school student reaches the age of adulthood while still a high school student, since the tuition support will continue to be decided by the income status of the parents, the student's legal guardians, no changes in the application procedures will be necessary.

Difficulties in recording income status

Should it be found difficult to register the income status of parents, etc., a different registration method than the above is possible. First, consult with your school for details.

Examples of cases where it is found difficult to report income status

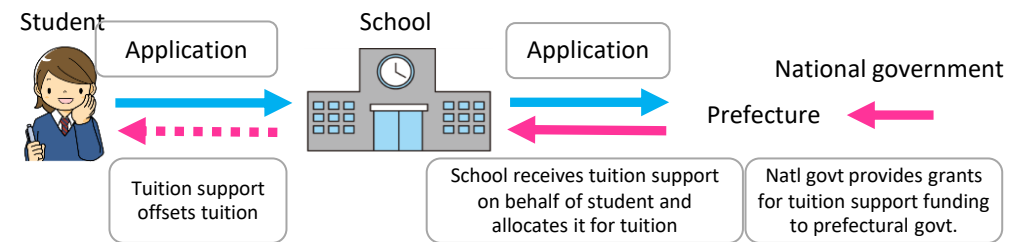
- Contact is difficult due to domestic violence or other reasons
- Parent lives overseas and does not pay residence tax in Japan

5. Tuition support payment method

The school establisher (prefecture, educational corporation, etc.) receives the tuition support on behalf of the student and allocates the funds to cover the tuition. Neither the student nor the parents receive the funds directly.

※ The tuition cost for a national public high school student will be zero.

※ In the case of a private high school student, the student's family must bear the difference between the tuition support amount and the actual amount of tuition. Contact your school for details.



6. High School Supplemental Scholarship Fund, etc.

In addition to the Tuition Support Fund, the national government subsidizes the High School Supplemental Scholarship Fund (repayment not required) that provides support to students from lower-income households for educational costs other than tuition (textbook and educational materials costs, etc.), and prefectures themselves have their own financial support programs.

※ To receive the High School Supplemental Scholarship, parents of students must apply to the prefecture where they are residing.

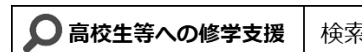
For information on how to apply, contact the school the student is attending or the relevant office in the prefecture where the family is residing. To find the contact office in each prefecture, see the "Contact List for the High School Supplemental Scholarship" at the website below.

"Contact List for the High School Supplemental Scholarship":
http://www.mext.go.jp/a_menu/shotou/mushouka/detail/1353842.htm



MEXT website:

http://www.mext.go.jp/a_menu/shotou/mushouka/index.htm



文部科学省

MINISTRY OF EDUCATION,
CULTURE, SPORTS,
SCIENCE AND TECHNOLOGY-JAPAN